

Report to: **Children's Services Scrutiny Committee**

Date: **9 September 2008**

By: **Director of Children's Services**

Title of report: **Annual Report Local Safeguarding Children Board**

Purpose of report: **To advise Scrutiny Committee Members of the inter-agency arrangements in place to safeguard children in East Sussex**

---

## RECOMMENDATIONS

**Scrutiny Committee is recommended to:**

- 1. Consider and comment on the annual report on the Local Safeguarding Children Board business plan.**
- 

### **1. Financial Appraisal**

1.1 There are no financial implications. The report describes services that are already provided from within Children's Services' budgets.

### **2. Supporting Information**

2.1 The Children Act 2004 placed a duty on Local Authorities to set up Local Safeguarding Children Boards (LSCBs) and on key partners to take part; furthermore it determined that *'LSCBs will co-ordinate and monitor member agencies' efforts to safeguard and promote the welfare of children, set policy and procedures, and establish local screening teams who will analyse the data with the aim of reducing local childhood death or injury. They will ensure proper investigation of child deaths so that similar future deaths can be prevented if possible'*. In 2006 the Government issued 'Working Together to Safeguard children', Chapter 3 provided detailed guidance regarding the organisation and structure of the LSCB and the functions it would provide. Working Together 2006 defined the role of members with regard to the LSCBs as follows:

*'Local Authority Elected Members and non-executive directors of other board partners should not be members of a LSCB. Their role, through their membership of governance bodies such as the cabinet of the local authority or a scrutiny committee or a governance board, is to hold their organisation and its officers to account for their contribution to the effective functioning of the LSCB'*. It was therefore agreed that the annual report and business plan of the LSCB should be reported to the Children's Services Scrutiny committee in order to enable that accountability.

2.2 This report advises the Committee on the work undertaken by the East Sussex Local Safeguarding Children Board (LSCB) in 2007/8 and outlines the business plan for 2008/9. Attached as Appendix 1 is the draft annual report of the East Sussex Local Safeguarding Children Board. This includes a retrospective review of the work of the LSCB in 2007/8 as well as the business plan for 2008/9.

2.3 Following the Children's Services Scrutiny Committee's last discussions of the LSCB report there were productive discussions about how to strengthen the links between the LSCB and the Members responsible for safeguarding within East Sussex County Council. As a result it has been arranged that before each LSCB Meeting relevant Lead Members and other members of the East Sussex Children's Services Scrutiny Committee are notified of the content of the agenda and after the Board has met there is a briefing about the issues discussed at the meeting.

2.4 During 2007/8 the LSCB has continued to have a high level of commitment from both individual representatives and the agencies they represent. A report was received by the LSCB in 2007 that detailed the findings of a self-audit undertaken by all LSCB agencies who reviewed their services against the standards determined in Section 11 of the Children Act 2004. Most agencies

are meeting the majority of the standards. All agencies are implementing action plans which will be reviewed in September 2008. It is intended there will be a follow-up audit in February 2009

2.5 Leaflets and consultation tools for children and young people who have child protection plans were completed in 2007/8 by young people supported by Xpress Advocacy. The information leaflet is to be used for both children and adults. A pilot child protection advocacy service was developed and 4 children from 2 families have taken up the service.

2.6 In 2007/8 there were no serious case reviews undertaken by the LSCB. However, the Audit Group met once as a Serious Case Review Panel and recommended to the LSCB Chair that a Multi-Agency review was undertaken. This review was completed during 2007/8 and the action plan will be reviewed in 2008/9. Some of the learning from the review has been incorporated into the training plan for 2008/9.

2.7 During 2006/7 a child safety sub-group was established and a consultant recruited to review arrangements for child safety in the community. The findings of this review were presented to the May 2007 LSCB Board meeting and a child safety action plan was incorporated into the business plan for 2007/8. Unfortunately due to pressure of other work and lack of resources this was not fully implemented in 2007/8 and the work of this sub-group was deferred – the sub-group was re-established in June 2008 and the work programme is being taken forward.

2.8 Barnardos undertook a review of inter-agency systems regarding young people at risk from prostitution, missing from home and involved in substance misuse across Sussex. This review was presented to the LSCB in September 2007 with an action plan to respond to its key findings. A Sussex-wide launch conference was held in November 2007 and the child safety sub-group is taking this forward in 2008.

2.9 In 2007/8 the Child Death Review Panel met regularly and reviewed over 30 child deaths. Key learning points from this work were the need to update child weaning information within the county and the need to improve co-ordination of information-sharing between police and hospital staff when children are moved to out of county hospitals. The work of the Child Death Review Panel has been reviewed as part of the national research and assistance has been given to other LSCBs setting up their arrangements across the country. It is intended that the East Sussex Child Death Review Panel will be expanded to incorporate Brighton & Hove in 2008/9. From April 2008 additional resources have been provided by national government to the Local Authority and the Primary Care Trust to enable the further development of this work. There will be a conference in 2009/10 to disseminate the findings from these panels to a wider audience.

2.10 The annual report also includes a statistical report about the safeguarding services as well as details about the training provided in 2007/8 and the outline training plan for 2008/9. The business plan for 2008/9 includes a work programme that will ensure that the LSCB is able to continue developing child death overview reporting processes, further develop advocacy and community child safety provision whilst maintaining core child protection services.

### **3. Conclusion**

3.1 An effective Local Safeguarding Children Board is in place within East Sussex and the business plan for 2008/9 will meet the statutory requirements of the LSCB.

#### **MATT DUNKLEY**

**Director of Children's Services**

Contact Officer: Fiona Johnson      Tel No. 01273 481289

#### **BACKGROUND DOCUMENTS**

Working Together to Safeguard Children 2006

**Local Members:** All

# ***East Sussex Local Safeguarding Children Board***

---

## ***Annual Report & Business Plan 2008-2009***



# **East Sussex LSCB Annual Report & Business Plan 2007-08**

## **Contents**

---

Introduction Page 3

---

Statement of Values Page 5

---

Work of the LSCB 2007 – 2008 Page 7

---

LSCB Business Plan 2008 – 2009 Page 10

---

## **Appendices**

---

1. Audit & Review annual statistical review  
and CPR Analysis Graphs Page 13

---

2. Review of LSCB training programme 2007/8  
and LSCB Training Plan for 2008/9 Page 20

---

3. LSCB Membership Page 37

---

The East Sussex Local Safeguarding Children Board (LSCB) is made up of representatives from the senior levels of all organisations in the area involved in protecting the welfare of children. Its purpose is to work co-operatively together to safeguard children within East Sussex. This requires proactive intervention where children are abused, targeted work with children at risk of harm and preventive work within the community to develop a safe environment for children. This report reflects back on the period April 2007-March 2008 and forward from April 2008 – March 2009.

---

## **Introduction**

In September 2003, following the completion of Lord Laming's Inquiry into the death of Victoria Climbiè, the Government issued 'Keeping Children Safe' a response to the Climbiè Inquiry and the Joint Inspectors Report Safeguarding Children 2002. This was followed by the Children Act 2004 which placed a duty on all relevant authorities to make arrangements to safeguard and promote the welfare of children; this primarily deals with how organisations in working with or coming into contact with children ensure that they have a regard to the safety and welfare of children in carrying out their normal functions.

Clause 11 of the Children Act 2004 requires that there is: -

- Senior management commitment to the importance of safeguarding and promoting children's welfare;
- A clear statement of the agency's responsibilities towards children available for all staff;
- A clear line of accountability within the organisation for work on safeguarding and promoting the welfare of children;
- Service development that takes account of the need to safeguard and promote welfare and is informed, where appropriate, by the views of children and families;
- Staff training on safeguarding and promoting the welfare of children for all staff working with or (depending on the agency's primary functions) in contact with children and families;
- Safe recruitment procedures in place;
- Effective inter-agency working to safeguard and promote the welfare of children; and
- Effective Information sharing.

Revised statutory guidance on the duties under Section 11 was issued in April 2007.

During 2006 Working Together to Protect Children was published. This document provided detailed guidance for LSCBs on developing the Board to include wider safeguarding responsibilities. It explained that the LSCB business plan should include work concerned with protection, proactive targeted work and prevention and included detailed guidance about the content of safeguarding and child protection policies and procedures. It identified new areas of work for the LSCB including the development of Child Death Review Panels and rapid response systems where a child has died.

During 2007 there was consultation by the government on Staying Safe, the first ever cross-Government strategy on improving children and young people's safety. This consultation closed on 31 October 2007 and the government has now published the Staying Safe Action Plan in response which outlines the key commitments the government will be taking forward over the next three years to improve children and young people's safety.

Another important Government development is the new Independent Safeguarding Authority (ISA) which will have a major impact on the recruitment and monitoring practices of people working or volunteering with children. Created under the Safeguarding Vulnerable Groups Act 2006, the ISA will decide who is unsuitable to work or volunteer with vulnerable groups. The ISA scheme will replace the current List 99, PoCA, PoVA and Disqualification Orders regimes. It will base its decisions by pulling together information held by various agencies, government departments and the CRB.

## **Statement of Values**

The member agencies of the East Sussex Local Safeguarding Children Board believe that all children living in or visiting the County have the right to: -

- Safety and security in a culture of high expectation, which provides protection from harm and exploitation and enables them to develop healthily to meet their full physical, intellectual and emotional potential.

In order for this to be realistic all member agencies are working to the standards within the Children Act 2004 to ensure that:-

- All those who work with children and young people know what to do if they are worried about possible harm.
- When concerns are reported, action is taken quickly and sensitively to help children and their families.
- Agencies that provide children and young people with services take steps to ensure they are safe and are comply with legal requirements.

## **The role and scope of the LSCB in East Sussex**

The three principal areas of activity that LSCB's are responsible for is outlined within statutory guidance as:

- Activity that affects all children and aims to prevent maltreatment, or impairment of health or development, and ensures children are growing up in circumstances consistent with safe and effective care.
- Proactive work that aims to target particular groups. For example: developing/evaluating thresholds and procedures for work with families whose child has been identified as 'in need' under the Children Act 1989, but where the child is not suffering or at risk of suffering significant harm and work to safeguard and promote the welfare of groups of children who are potentially more vulnerable than the general population.
- Responsive work to protect children who are suffering or at risk of suffering maltreatment.

## **The LSCB's relationship with wider arrangements to improve outcomes for Children.**

In East Sussex the LSCB is part of the wider Children and Young People's Trust which has the aim of improving the overall well-being (i.e. the five Every Child Matters outcomes) of all children in the local area. Whilst the work of the LSCB contributes to the wider goals of improving the wellbeing of all children, it has a particular responsibility for areas of safeguarding activity and will need to ensure the effectiveness of this work.

The Director of Children's Services together with the Children's Trust have overall responsibility for the delivery of the five key outcomes of *Every Child Matters*. Whereas the Children's Trust has a wider role in planning and delivering services the LSCB objectives are about co-ordinating and ensuring the effectiveness of what its member organisations do individually and

together. The LSCB contributes to delivery and commissioning through the children and young people's plan and the Children's Trust arrangements.

The LSCB has the responsibility of ensuring the effectiveness and co-ordination of the safeguarding system. The delivery of the safeguarding system however remains the responsibility of the individual agencies and the Children's Trust.

The LSCB provides a scrutiny function for the Children's Trust in the area of safeguarding, and is responsible for producing and reviewing procedures, promoting training and carrying out audit and performance monitoring in the area of safeguarding and child protection.

These activities contribute to the Children's Trust's strategy for children and families and to the Children and Young People's Plan and relevant Local Area Agreements. The Chair of the East Sussex LSCB provides regular reports to the Chair of the Children and Young People's Trust Executive Group.

The East Sussex LSCB has an authoritative and independent voice working within the Children's Trust. The East Sussex LSCB may raise performance issues regarding children's safeguarding directly with partner agencies and the Children's Trust. The East Sussex LSCB may seek independent advice, where appropriate, from external bodies and inspectorates.

**The key priorities of the East Sussex LSCB are:**

- To ensure that children within East Sussex are protected from harm.
- To co-ordinate agencies' activity to safeguard and promote the welfare of children.
- To ensure the effectiveness of agencies' activity to safeguard and promote the welfare of children through monitoring and review.

**The major functions of the East Sussex LSCB are:**

- To ensure the co-ordination of child protection activity in East Sussex.
- To evaluate safeguarding activity within East Sussex.
- To provide a scrutiny function for the Children's Trust in the area of safeguarding.
- To produce and review procedures in relation to safeguarding.
- To ensure multi-agency training on safeguarding and promoting welfare is provided which meets local needs.
- To conduct audit and performance monitoring of safeguarding activity.
- To raise public and professional awareness of safeguarding issues.
- To contribute, through its role in monitoring and promoting safeguarding, to the planning of services for children in East Sussex.
- To carry out serious case reviews where abuse or neglect is known or suspected.
- To collect and analyse data on all child deaths within East Sussex.
- To develop procedures to respond to unexpected child deaths in East Sussex.
- To ensure that the wishes and feelings of children and young people and their families are considered in the delivery of safeguarding services.



## **Work of the Local Safeguarding Children Board 2007-8**

This section provides a brief summary of the main aspects of the LSCB's work during this period. During the year the LSCB has had a high level of commitment from both individual representatives and the agencies they represent. This has been against a backdrop of significant change at a local and national level. During 2007/8 the LSCB worked hard to achieve continued development and maintenance of best practice through its programmes of developing procedures, training, auditing work and encouraging communication and collaboration between agencies and professional groups.

In April 2007 the LSCB set itself a challenging series of objectives which were contained in the Business Plan. Set out below is a summary of progress made: -

### **Ensure the establishment of an effective functioning Local Safeguarding Children Board.**

The LSCB continues to function well. During 2007/8 some sub-groups reviewed their terms of reference and all delivered on targets included in the business plan. During 2007/8 there were productive discussions about how to strengthen the links between the LSCB and the Members responsible for safeguarding within East Sussex County Council. As a result it has been arranged that following each LSCB board Meeting there will be a briefing of relevant Lead Members and other members of the East Sussex Children's Services Scrutiny Committee about all the issues discussed at the LSCB meeting. In addition the LSCB annual report is reviewed by the East Sussex Children's Services Scrutiny Committee and is also presented at the Primary Care Trusts' Professional Executive Committee and other LSCB member organisation's senior management meetings.

### **Ensure that there is effective learning from the Serious Case Reviews completed in 2006/7.**

Throughout the year there was regular review of action plans by the LSCB steering group and the LSCB training programme was amended to reflect findings from the serious case reviews.

One recommendation from a serious case review was to develop a protocol for reviewing the risk posed by alleged perpetrators when they do not have immediate contact with children and there is no prosecution. This has been fully discussed at both the Liaison groups and an outline process agreed. This has been incorporated into a Sussex-wide protocol.

A further piece of work stemming from a multi-agency review was to undertake an audit of thresholds in neglect work. This audit of approximately 100 case files was undertaken during 2007/8 and the final report will be presented to the audit group in April 2008.

In 2007/8 there were no serious case reviews undertaken by the LSCB. However, the Audit Group met once as a Serious Case Review Panel and recommended to the LSCB Chair that a Multi-Agency review was undertaken. This review was completed during 2007/8 and the action plan will be reviewed in 2008/9. Some of the learning from the review has been incorporated into the training plan for 2008/9.

**Improved community awareness of child safety and responsibilities for assisting to protect children.**

During 2006/7 a child safety sub-group was established and a consultant recruited to review arrangements for child safety in the community. The findings of this review were presented to the May 2007 LSCB Board meeting and a child safety action plan was incorporated into the business plan for 2007/8. Unfortunately due to pressure of other work and lack of resources this was not fully implemented in 2007/8 and the work of this sub-group was deferred – it is intended that the sub-group will be re-established from June 2008.

**To ensure that the wishes and feelings of children and young people are considered in the delivery of safeguarding services.**

Leaflets and consultation tools for children and young people who have child protection plans were completed in 2007/8 by young people supported by Xpress Advocacy. The information leaflet is to be used for both children and adults. A pilot Child Protection advocacy service was developed and 4 children from 2 families have taken up the service. A full advocacy service for all children will be included in the Local Authority tender process to start in April 2008 which will provide advocacy services for looked after children and those with child protection plans.

**Fewer children suffering from neglect or abuse.**

Barnardos undertook a review of inter-agency systems regarding young people at risk from prostitution, missing from home and involved in substance misuse across Sussex. This review was presented to the LSCB in September 2007 with an action plan to respond to its key findings. A Sussex-wide launch conference was held in November 2007 which agreed to establish a sub-group to take forward this area of work in 2008.

During 2007 there has been continued consultation about ensuring that processes are in place so that applications under the Licensing Act 2003 and Gambling Act 2005 are appropriately scrutinised. As part of the child safety action plan District and Borough councils were asked to act as appropriate authorities on behalf of the LSCB and there are ongoing discussions regarding this work.

In 2007 the self-audit by all agencies of their services against the standards in Section 11 of the Children Act 2004 was completed. All statutory agencies responded and most agencies are meeting the majority of the standards. All agencies are implementing action plans which will be reviewed in September 2008. It is intended there will be a follow-up audit in February 2009.

The Audit group intended to undertake an audit of social care & police files to review whether all referrals involving a criminal offence were being referred to the police. However, the social care ICS database is not able to extract this data until September 2008 at the earliest so this audit was postponed to Spring 2009.

In 2007/8 the Child Death Review Panel has met on five occasions and reviewed over 30 child deaths. Key learning points from this work were the need to update child weaning information within the county and the need to improve co-ordination of information-sharing between police and hospital staff when children are moved to out of county hospitals. The work of the Child Death Review Panel has been reviewed as part of the national research and assistance has been given to other LSCBs setting up their arrangements across the country. It is intended that the East Sussex Child Death Review panel will be expanded to incorporate Brighton & Hove in 2008/9.

Inter-agency Private Fostering arrangements were reviewed in by the Audit Group in May 2007. This service was also inspected as part of the Ofsted inspection of Local authority Fostering services and the Audit Group will be monitoring the action plan arising from that inspection.

### **Maintaining and improving the quality of inter-agency child protection interventions**

During 2007/8 protocols were agreed to ensure consistent Sussex-wide arrangements for conducting forensic child protection medicals and a countywide rota for out of hours services was agreed and implemented. There have continued to be pressures on paediatric time for in-hours services but processes are underway for strengthening these services.

Systems for ensuring the notification of children by Health Trusts under sections 85 and 86 of the Children Act 1989 were agreed during 2007 with the local Hospital Trust.

The Police and Social care staff have lead a short-life working group to review the use of the protocol regarding children missing from care and to develop a protocol of inter-agency response to all children who go missing. This group is piloting an inter-agency response to missing children which may be rolled out across Sussex based on the Blackpool model. The police are providing additional resources to lead on this work which will be supported by the developing CSD Youth support teams.

### **To ensure a uniform approach to safeguarding and consistency of practice across Sussex.**

The inter-agency child protection training programme was reviewed and delivered in 2007/8. There was close working with the team implementing CAF to ensure that good quality tier1 safeguarding training was provided. Additionally a Disabled Children and Safeguarding Course aimed at improving safeguarding and raising awareness of risk to disabled children was presented as well as a 1 day multi-agency course on working with disabled children and emerging sexuality designed to improve skills for professionals addressing disabled children's sexuality.

### LSCB Business Plan 2008/9

LSCB Objectives	Output	Lead Responsibility	Timescales	Outcomes
Maintain an effective functioning Local Safeguarding Children Board	Undertake a review of the terms of reference of the LSCB including a review of the functioning of all the sub-groups.	LSCB Steering Group	<b>Ongoing through 2008/9</b>	Review to be completed by October 2008. The board and relevant sub-groups continue to functioning effectively
Ensure that there is effective learning from the Multi-Agency Review completed in 2007/8	LSCB to regularly review the action plans arising from the Multi-Agency Review	LSCB Steering Group	<b>September 2008</b>	Improved child protection processes in place
Improved community awareness of child safety and their responsibilities for assisting to protect children.	LSCB to Implement the Child Safety Action plan leading from the review of child safety arrangements	LSCB Steering Group	<b>Complete by March 2009</b>	LSCB has a clear programme of work promoting and developing the preventive safeguarding agenda
To ensure that the wishes and feelings of children and young people are considered in the delivery of safeguarding services.	To put in place arrangements to ascertain the wishes and feelings of children (including children who might not be ordinarily heard) about the priorities and effectiveness of local safeguarding work.	LSCB Steering Group	<b>March 2009</b>	Consultation and advocacy systems are established based on the learning from the pilot schemes.
Fewer children suffering from neglect or abuse	To implement any recommendations stemming from the Barnardos review of inter-agency systems regarding young people at risk from prostitution, missing from home and involved in substance misuse	LSCB Steering Group	<b>December 2009</b>	LSCB sub-group established to implement awareness raising around issues of child trafficking and prostitution and to implement work around missing persons including the development of the missing children protocol.
Fewer children suffering from neglect or abuse	Audit Group to review private fostering services and to determine the nature of any further audit that is required.	LSCB Audit Group	<b>September 2008</b>	Private fostering services safeguard all relevant children.

LSCB Objectives	Output	Lead Responsibility	Timescales	Outcomes
Fewer children suffering from neglect or abuse	All partners to implement changes required from the Section 11 audit. All partners to undertake a further Section 11 Audit in February 2009 to check that standards have been improved.	LSCB Audit group	<b>By March 2009</b>	Action plans are reviewed and further audit undertaken. All statutory agencies meeting the minimum standards defined in the Children Act 2004
Fewer children suffering from neglect or abuse	To undertake an audit of social care & police files to review whether all referrals involving a criminal offence were being referred to the police	LSCB Audit Group	<b>March 2009</b>	Practice is in accordance with Working Together and Bichard Audit recommendations
Fewer children suffering from neglect or abuse	Further develop the Child Death Review Panel processes joining with Brighton and Hove LSCB.	LSCB Audit Group	<b>March 2009</b>	Wider Child Death Overview Panel established and appropriately resourced – systems in place to review all deaths from September 2008
Maintaining and improving the quality of inter-agency child protection interventions	Develop and deliver an agreed programme of Inter-agency child protection training.	LSCB Training Group	<b>Complete by March 09</b>	Design, deliver and evaluate the 2004/05 Training and Development Plan.
To ensure a uniform approach to safeguarding and consistency of practice across Sussex.	Develop quarterly audit systems to enable quarterly audits of all agency case files to review whether they meet the Laming standards and comply with LSCB procedures	LSCB Audit Group	<b>Complete by March 09</b>	All services are operating in accordance with LSCB procedures and protocols
Maintaining and improving the quality of inter-agency child protection interventions	The LSCB to ensure that all refuges within the area have undertaken relevant training and are clear about their safeguarding responsibilities.	LSCB Steering Group	<b>Complete by March 09</b>	The role of refuges in protecting children from harm is clear to all relevant personnel
Maintaining and improving the quality of inter-agency child protection interventions	The LSCB to contact the refuges within the area and establish improved communication links.	LSCB Steering Group	<b>March 09</b>	There are positive working relationships between Refuges and statutory agencies within the area.

LSCB Objectives	Output	Lead Responsibility	Timescales	Outcomes
Better support for children and young people who have witnessed domestic violence	To review current inter-agency processes in place to intervene to prevent domestic violence adversely affecting children. Better information sharing around domestic violence.	Sussex Police & CPLGs	<b>March 2009</b>	New protocols in place regarding inter-agency responses to domestic violence. Improved information sharing between police and other agencies regarding domestic violence
Better support for children and young people who have witnessed domestic violence.	To review initiatives and services for children and families experiencing domestic violence – and produce a report identifying areas for improvement and developmental opportunities.	Child Safety Sub-group	<b>Autumn 2008</b>	Review completed and action plan with recommendations presented to the LSCB.
Maintaining and improving the quality of inter-agency child protection interventions	Ensure the smooth implementation of the Independent safeguarding Authority procedures within East Sussex .	LSCB Steering Group	<b>Autumn 2009</b>	All personnel directly working with children to be registered with the ISA
Maintaining and improving the quality of inter-agency child protection interventions	Ensure that there are sufficient resources to enable appropriate paediatric cover for safeguarding work at all times.	LSCB Steering Group	<b>Autumn 2009</b>	All children requiring a safeguarding medical to receive a service within appropriate time-scales
Communicating and raising awareness of people of the need to safeguard children	To review current LSCB child safety information and consider what action should be taken to update and improve the literature that is available.	LSCB Steering Group	<b>Autumn 2009</b>	Improved awareness within the general public of safeguarding and their responsibilities to contribute to safeguarding children.

## **Appendix 1**

### **LSCB Audit Sub-group Annual Report of Core Data 2007-2008**

This annual report includes mainly data for the period ending 31/3/07 as national data on performance for year ending 31/3/08 is not fully available until spring 2009. In some areas where it is possible more recent data has been included.

#### **A comparison of East Sussex child protection statistics with national data for year ending 31/3/2007**

On 31/3/07 there were 3.5 children with child protection plans per 1,000 of the population aged 0-17 within East Sussex which was above the national rate of 2.5 children per 1,000. During the year the number of children within East Sussex increased to 4.2 per 1,000 but dropped by 31/3/08 back to 3.5.

During 2006/7 the proportion of children with child protection plans for emotional abuse remained very high at 44% within East Sussex compared to the national rate of 25%. The proportion with child protection plans for neglect decreased to 39 % compared with the national rate of 45%. The percentage with child protection plans for physical abuse was 11% while the national rate was 12% and for sexual abuse was 6% compared to the national figure of 7%.

As of 31/3/08 the proportion of child protection plans for sexual abuse remains the same at 6%, the number of child protection plans for emotional abuse has slightly increased to 45% and child protection plans for neglect increased to 41%, while child protection plans associated with physical abuse decreased to 8%.

East Sussex continues to define plans by only one category whereas national data is skewed by 11% of child protection plans being multiple categories it is probable that in East Sussex these children are categorised under emotional abuse as that can cover a number of the other options.

The age distribution of children with child protection plans in East Sussex continues to have higher numbers of younger children with plans when compared with national data. During 2007/8 the proportion of children under 1 with a child protection plan in East Sussex was higher than the national figure for 2006/7 (23% compared with 12%) and the proportion of 10-15 year olds with child protection plans also remains below the national average (20% compared with 28%).

#### **Key performance indicators for year ending 31/3/2007**

East Sussex continues to perform well on all key performance indicators in 2006/7 achieving good or excellent in all categories:-

98.3% of reviews were held on time in 2007/8 compared to 99.5% nationally in 2006/7. This dip in performance related to three reviews on five children and was a result of major sickness within the safeguarding Unit in January 2008. At this time the Child Protection Advisors were under significant pressure because of the increase in the number of children with child protection plans. From April 2008 an additional Child Protection Advisor has been recruited which should ensure that in 2008/9 100% of reviews are held on time which is the performance that has been achieved for the last two years.

The number of children whose child protection plans had been in place for over two years before they were ceased has increased slightly to 6.7% in 2007/8 compared with a national average of 5.8% in 2006/7.

Repeat Child Protection Plans increased to 14.0% locally, compared with the national figure of 13.4% in 2006/7. Performance on this indicator deteriorated in 2005/6 and a review of the causes of repeat child protection plans indicated a need for greater caution where the major family factors leading to repeat plans were the long-term influences on families of substance misuse, mental health difficulties and domestic violence. Child Protection Advisors exercised greater caution when considering

ceasing child protection plans where these factors were relevant particularly if the child protection plan had been in place for less than one year. This may have resulted in the slight increase in the numbers of child protection plans ceasing after two years and this area will need to be kept under review in 2008/9. This may well be further influenced by the introduction of the Public Law Outline which may lead to children having child protection plans for longer periods.

**Social Care data for the year ending 31/3/08 (national data for 2007 is in brackets)**

Out of a total of 3,664 (545,000) referrals to Social Care 610 or 17% (123,900, 23%) were repeat referrals that previously had been made within the last year. This is a significant improvement from 22% last year. There were 3,062 (305,000) initial assessments undertaken that is 84% (56%) of total referrals, of which 2,472 or 81% (208,700, 68%) were completed within seven days. Of the 2,089 (93,400) core assessments undertaken in the year 1,734 or 83% (73,300, 78%) were completed within 35 days.

**Health data for year ending 31st March 2008**

Paediatricians working for East Sussex Hospitals NHS Trust performed 65 child protection medicals during the year ending 31<sup>st</sup> March 2008; 26 of these took place at Eastbourne District General Hospital and 39 were undertaken at the Conquest Hospital. This represents a decrease of 17% compared to the number of medicals carried out during the previous year, although it is thought that a few of the welfare medicals carried out at EDGH may have been missed in this year's data collection.

The breakdown of these medicals was as follows: -

	<b>Physical Abuse</b>	<b>Sexual Abuse</b>	<b>Welfare Neglect/emotional abuse</b>	<b>Totals</b>
<b>Eastbourne DGH</b>	<b>3</b>	<b>12</b>	<b>11</b>	<b>26</b>
<b>Conquest</b>	<b>1</b>	<b>10</b>	<b>28</b>	<b>39</b>
<b>TOTALS</b>	<b>4</b>	<b>22</b>	<b>39</b>	<b>65</b>

The most striking factor to emerge from the analysis of this year's child protection medical activity is the dramatic fall in the number of medicals undertaken because of concerns regarding physical abuse. There has been a general downward trend in physical abuse medicals in recent years although there was a slight increase to 33 in the year to 31<sup>st</sup> March 2007 compared to 32 in the year ending 31<sup>st</sup> March 2006. The data for physical abuse medicals tends to be more robust than the welfare medical figures due to the nature of the funding arrangements for this work. In addition all consultant paediatricians were contacted in the collation of these figures. It is therefore unlikely that the total of 4 medicals recorded above represents a significant underestimate of this activity. Further multi-agency work will be required to identify the factors underlying the decline in requests for physical abuse medicals.

It is important to note that children who are admitted to hospital or attend the Emergency Department and are subsequently found to have injuries which are considered to be non accidental in origin are not included in these figures. The number of physical abuse medicals recorded above therefore represents the medicals which are generated at the request of the police or Children's Social Care.



The number of sexual abuse medicals undertaken increased from 12 in the previous year but is in line with the more typical figure of 15 – 25 in recent years.

Despite the possibility that a few welfare medicals have been omitted from this years total, the number of welfare medicals recorded has increased by 10% on the previous year

### **Joint Examinations**

All except two of the Child Sexual Abuse medicals were carried out by two paediatricians. The medicals which were carried out by a single paediatrician took place out of hours. There were no joint medicals by carried out with forensic medical practitioners but a forensic nurse practitioner did assist the paediatrician with one of the out of hours medicals

### **Out of Hours Examinations**

Two of the Child Sexual Abuse medicals were conducted out of hours as discussed above. The majority of the physical abuse medicals were conducted during working hours, however information is not currently collated regarding the timing of physical abuse medicals and therefore further breakdown of these figures is not possible. All of the welfare medicals took place within normal working hours.

An out-of-hours rota was established from 1<sup>st</sup> January 2007 for child sexual abuse medicals. This rota covers East Sussex, Brighton and Hove and Mid Sussex and provides cover from 9am till 5pm for weekends and Bank Holidays. Urgent physical abuse medicals are carried out by the acute paediatrician on call as required.

### **Police Data for 1/4/07 - 31/3/08**

**Battle.** There were no recorded repeat child protection (Section 47) investigations during the relevant period. 37 'police protections' were recorded as being taken on children in the relevant period, of which 8 were repeat 'police protections'. The detection rate for child abuse crimes was 32.8%

### **Eastbourne.**

There were no recorded repeat child protection (Section 47) investigations during the relevant period. 58 'police protections' were recorded as being taken on children in the relevant period, of which 0 were repeat 'police protections'. The detection rate for child abuse crimes was 36.3%

### **NSPCC Data**

In East Sussex the NSPCC have a service based in the Silverhill area of St Leonard's which provides a range of counselling, advisory and advocacy service for vulnerable and 'at risk' children and young people.

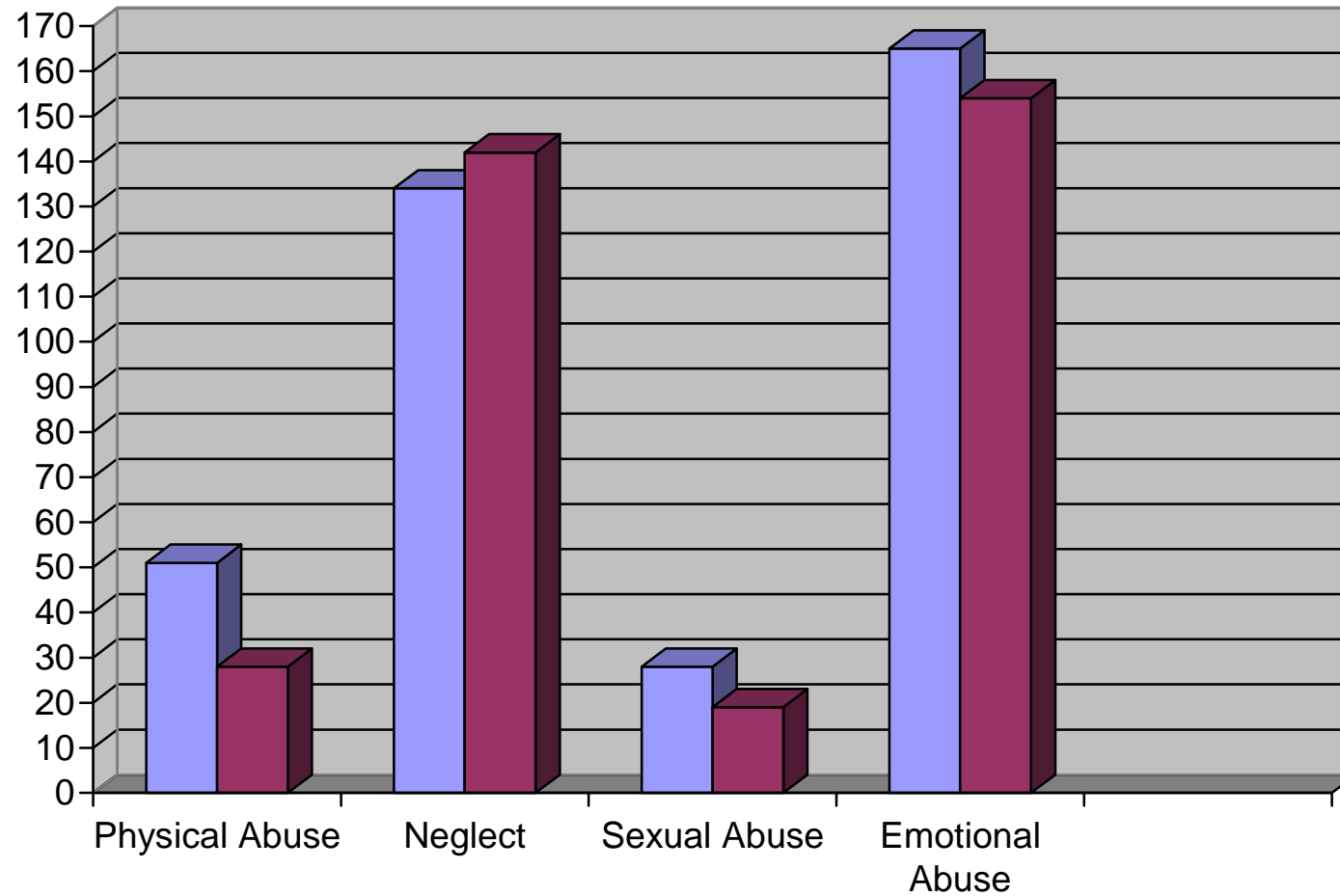
The team covers the Hastings and Rother area of East Sussex and the nature of services and model of delivery is: -

- On site counselling at 9 local schools (primary and secondary).
- Lunchtime walk-in facilities at a number of schools.
- Peer support/mentoring scheme at two secondary schools and developing at one primary school.
- Office based counselling, advice and advocacy, and other therapy for children, young people (and their friends and family) both self and assisted referral.

- Solution Talk (solution focussed service for children, young people and their friends and family). Self and assisted referral.
- Community based evening walk-in service - range of activity, individual and group methods of engaging young people at risk.
- Group work with excluded/at risk young people
- Young People's Advisory Group YPAG

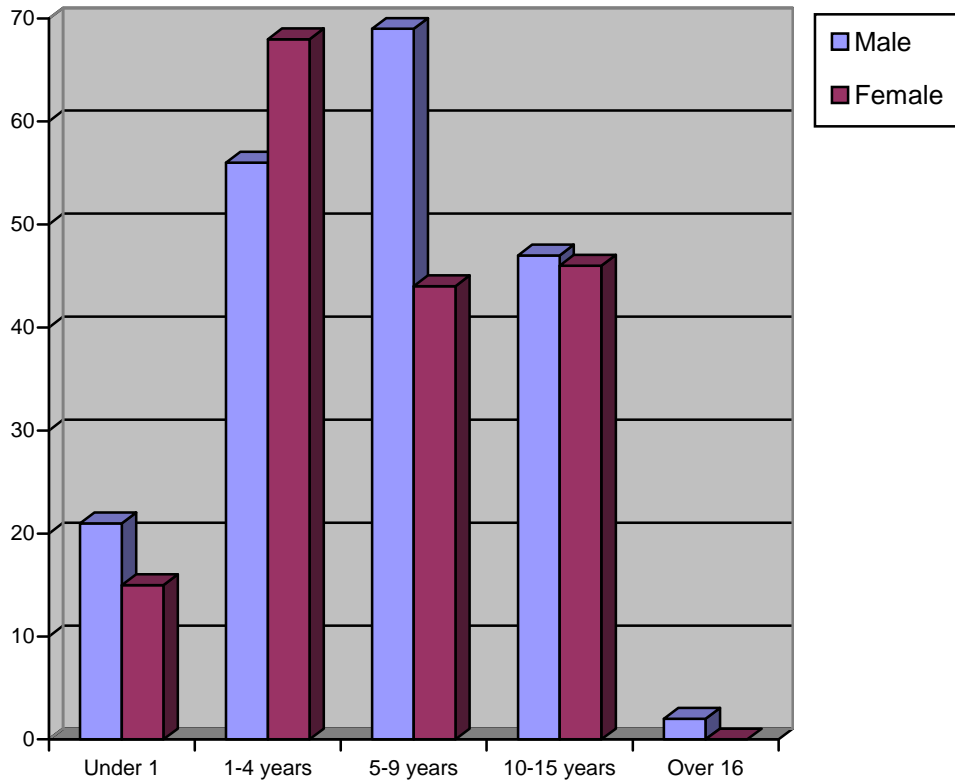
Nationally the NSPCC provides a 24 hour National Child Protection Helpline (0800 800 500) About 13% of calls received relate to children at serious risk of harm, and these result in referrals to the appropriate child protection agencies for further investigation.

***Analysis of Number of child protection plans that were started during the Years Ending 31st March  
2007 and 31st March 2008 Number of plans started: 378 and 343***

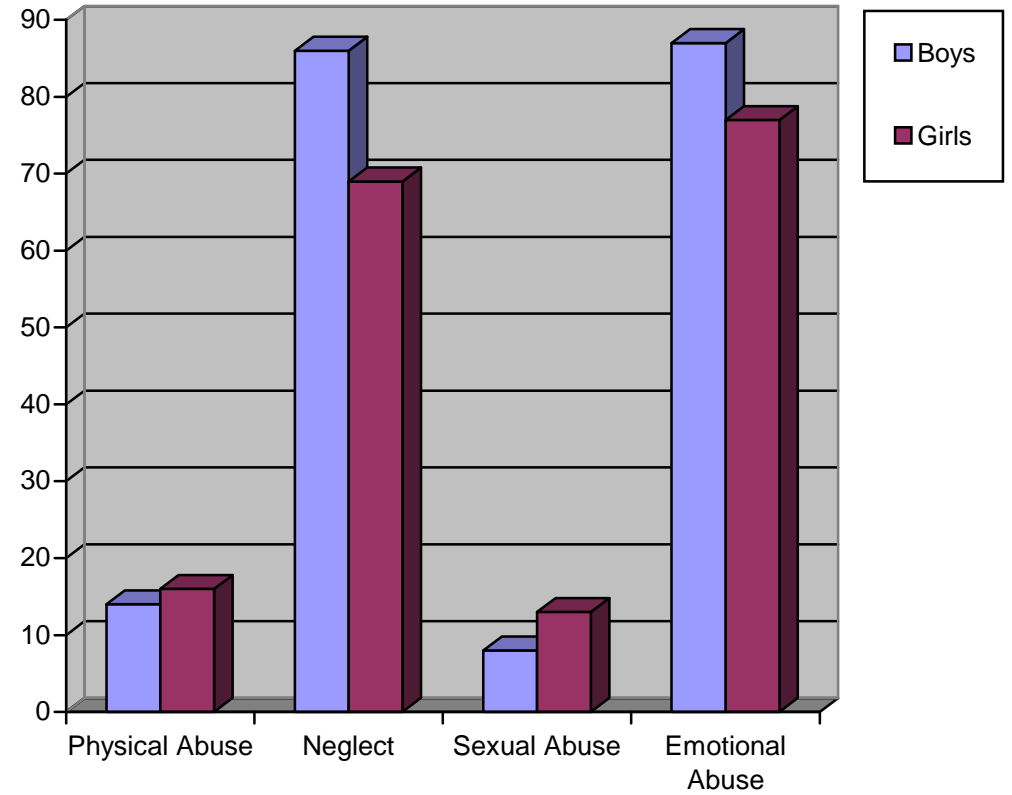


**2006-7** **2007-8**

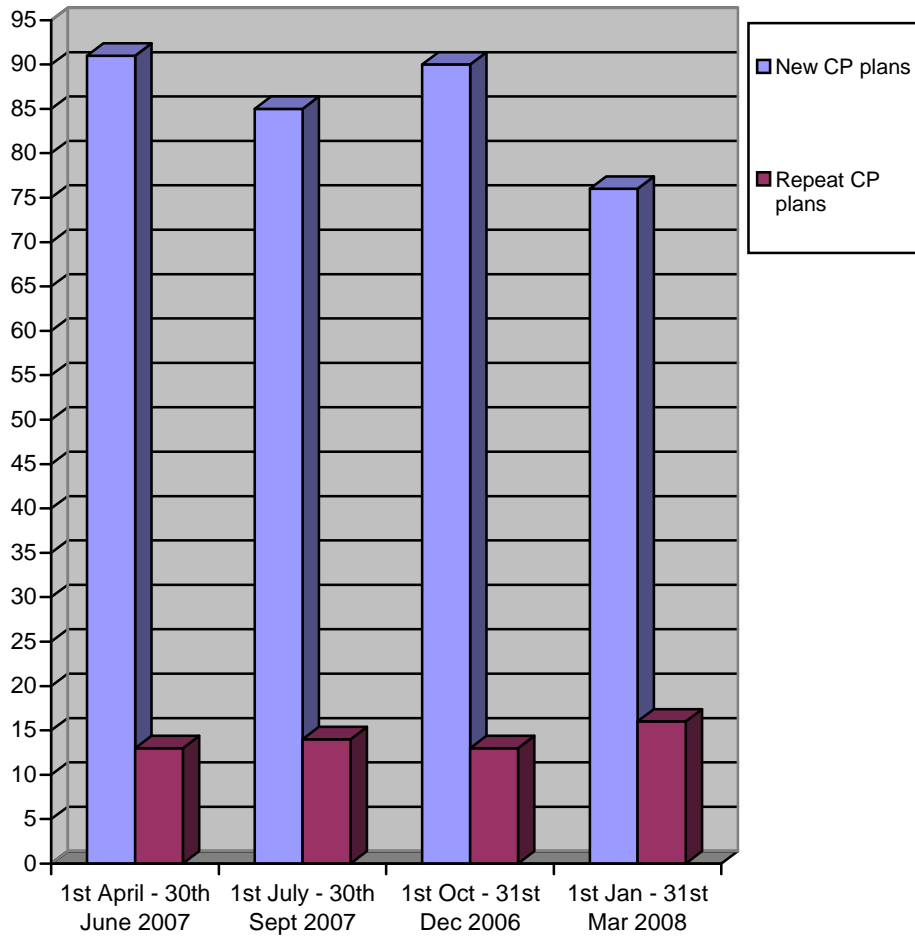
**Analysis by Gender & Age Group - Number with child protection plan @ 31.03.2008 - 370**



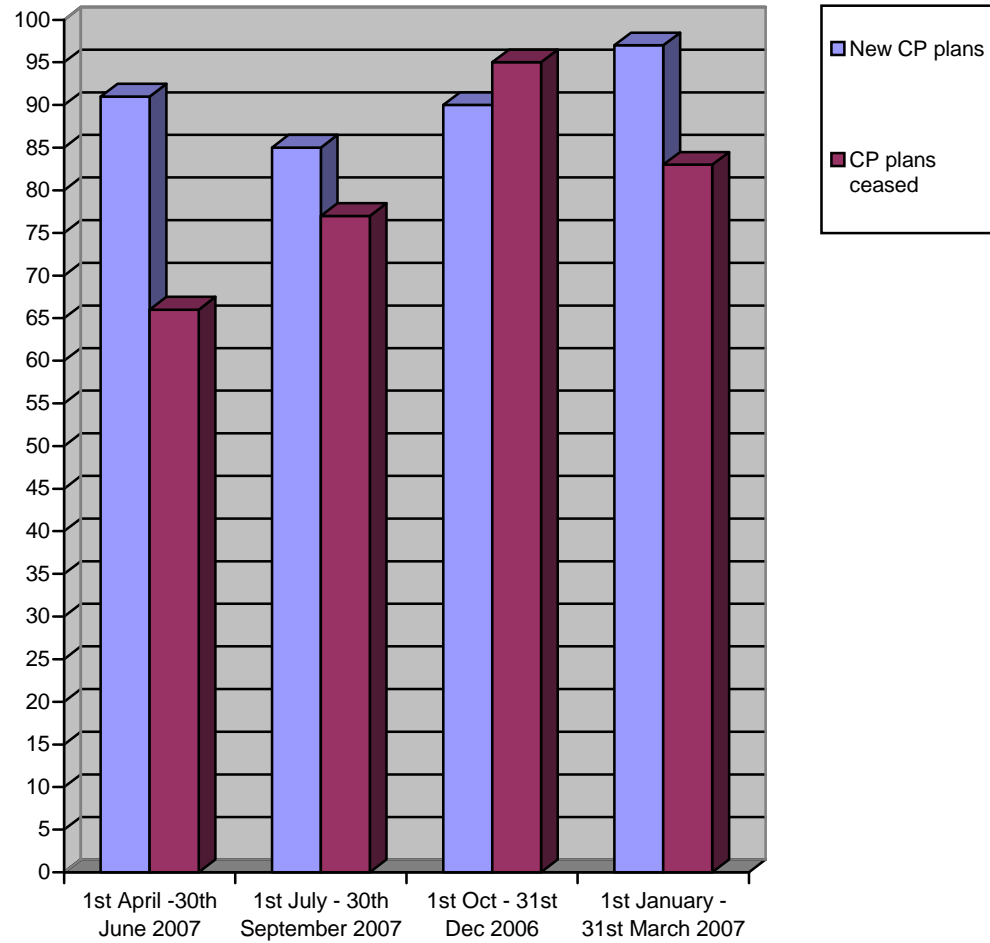
**Child Protection Activity - Analysis by Category & Gender - Number with child protection plan @ 31.03.2008 - 370**



**Analysis of new plans and repeat plans by quarter for year ending 2007/8**



**Analysis of child protection plans started and ceased by quarter for year ending 2007/8**



## Appendix 2 Review of LSCB Training Plan for 2007/8

<b>TRAINING TARGETS</b>	<b>ACHIEVEMENTS</b>	<b>OUTCOMES</b>	<b>EVALUATION FEEDBACK 2006/07</b>
<p><b>Child Protection – Introduction to Joint Investigations</b></p> <p>Aims: To enhance social workers knowledge of the Joint Investigation Process.</p>	<p>3 x 1 day course (2 additional courses due to operational demand)</p> <p>32 attended from Children’s Services Social Care.</p>	<p>Participants improved their investigative skills in working with other agencies during Joint Investigations of Child Abuse.</p> <p><b>Feedback received</b></p> <p>97% agreed course met development needs.</p>	<p>ASS – CSSC – 32 CSEd – CSEdS – H – HS – POL – PROB – SubM – YOT – Oth –</p>
<p><b>Child Protection – Joint Investigations &amp; Achieving Best Evidence</b></p> <p>Joint Police and Social Services Department training on Interviewing Children under MOGP (becoming Achieving Best Evidence) guidelines.</p>	<p>1 x 8 day course</p> <p>12 staff attended</p>	<p>Participants were able to share respective agency experiences and knowledge of the Joint Investigation process and plan and observe video Achieving Best Evidence Interviews.</p> <p><b>Feedback received</b></p> <p>100% agreed course met development needs.</p>	<p>ASS – CSSC – 9 CSEd – CSEdS – H – HS – POL – 3 PROB – SubM – YOT – Oth –</p>
<p><b>Joint Investigation Practice Review Days.</b></p>	<p>3 x 1 day conferences.</p> <p>137 staff from police and social care.</p>	<p>Participants gained an update about Good Practice and techniques when Achieving Best Evidence LSCB Procedure; Interviewing Disabled Children. Participants also had input from Barristers regarding court perspectives on</p>	<p>ASS – CSSC – 100 CSEd – CSEdS – H –</p>

<b>TRAINING TARGETS</b>	<b>ACHIEVEMENTS</b>	<b>OUTCOMES</b>	<b>EVALUATION FEEDBACK 2006/07</b>
		<p>the quality of video interviewed and heard research regarding police and social workers experience of joint investigations.</p> <p><b>Feedback received</b></p> <p>98% agreed course met development needs</p>	<p>HS – POL – 37 PROB – SubM – YOT – Oth –</p>
<p><b>An Introduction to Basic Child Protection Awareness for Voluntary and Community Groups</b></p> <p>Aims: To provide a variety of staff with knowledge and understanding of Child Protection and Child Abuse Issues.</p>	<p>1 day course for staff from a variety of non-statutory voluntary/private/independent sectors. Pre-school providers, Community/Leisure groups.</p> <p>3 x 1 day courses</p> <p>57 attended</p>	<p>Participants were able to identify and respond to child protection concerns. They learned about current procedures and how to communicate effectively in an inter agency context.</p> <p><b>Feedback received:</b></p> <p>94% agreed course met development needs.</p>	<p>ASS – CSSC – CSEd – CSEdS – H – HS – POL – PROB – SubM – YOT – Oth – 57</p>
<p><b>Parental Substance and Alcohol Misuse and The Impact on Children</b></p> <p>Aims: To explore inter-agency roles and responsibilities when assessing and managing risk to children whose parents misuse alcohol and substances.</p>	<p>1 x 2 day course (1 course cancelled due to other demands on trainers from Sub/Alcohol Team)</p> <p>15 attended</p>	<p>Participants learned about the effects of particular substances and explored ways of identifying risk to children and examined thresholds relating to risk in an interagency context. They were able to reflect on current research and local government initiatives and explore effective interventions.</p> <p><b>Feedback Received:</b></p> <p>100% agreed course met development needs.</p>	<p>ASS – CSSC – 13 CSEd – CSEdS – H – 1 HS – POL – PROB – SubM – 1 YOT – Oth –</p>

<b>TRAINING TARGETS</b>	<b>ACHIEVEMENTS</b>	<b>OUTCOMES</b>	<b>EVALUATION FEEDBACK 2006/07</b>
<p><b>Domestic Violence and Its Impact on Children</b></p> <p>Aims: To enable participants to gain an understanding of the emotional, psychological and physical consequences for children who witness Domestic Violence.</p>	<p>2 x 2 day courses</p> <p>42 attended</p>	<p>Participants were able to explore how Domestic Violence affects the lives of children and their families through use of current research. They were given up to date information about current policies, local initiatives and resources.</p> <p><b>Feedback Received:</b></p> <p>92% agreed course met development needs.</p>	<p>ASS – 1 CSSC – 24 CSEd – 1 CSEdS – 2 H – 8 HS – POL – PROB – 1 SubM – 1 YOT – 2 Oth - 2</p>
<p><b>Working together in Core Groups</b></p> <p>Aims: To facilitate local networking between professionals who are likely to work together in core groups.</p>	<p>2 x 1 day course. (an extra course ran due to operational demand)</p> <p>32 attended.</p>	<p>Participants learnt about the purpose and function of core groups and how to develop Child Protection Plans. They looked at theories about Group Dynamics and what problems might arise during inter-agency workings.</p> <p><b>Feedback received:</b></p> <p>90% agreed course met development needs.</p>	<p>ASS – CSSC – 14 CSEd – CSEdS – 4 H – 10 HS – POL – PROB – SubM – 1 YOT – Oth – 3</p>
<p><b>Participating in the Child Protection Conference Process</b></p> <p>Aims: To explore the purpose and</p>	<p>2 x 1 day courses</p> <p>29 attended</p>	<p>Participants were given the opportunity to familiarise themselves with the processes of Child Protection Conferences and similar meetings. They were provided with an understanding of the requirements of their</p>	<p>ASS – 4 CSSC – 13 CSEd – 1 CSEdS – H – 4 HS –</p>



<b>TRAINING TARGETS</b>	<b>ACHIEVEMENTS</b>	<b>OUTCOMES</b>	<b>EVALUATION FEEDBACK 2006/07</b>
function of Child Protection Conferences and to provide participants with an understanding of their statutory function in relation to preparation and attendance at such meetings.		professional roles.  <b>Feedback Received:</b>  90% agreed course met development needs.	POL – PROB – 4 SubM – 3 YOT – Oth – 2
<p><b>Child Protection In a Multi-Agency Context</b></p> <p>Aims: To enable participants to gain a greater understanding of their agency role and that of all other agencies regarding Child Protection</p>	<p>2 x 1 day course</p> <p>48 attended</p>	<p>Participants were able to gain a greater understanding about the structure and role of the key agencies involved in Child Protection.</p> <p>They learned about both single and multi-agency dimensions to the whole Child Protection Process.</p> <p><b>Feedback Received:</b></p> <p>92% agreed course met development needs.</p>	<p>ASS – CSSC – 14 CSEd – 3 CSEdS – 4 H – 14 HS – 1 POL – PROB – 8 SubM – YOT – Oth – 4</p>
<p><b>Teenage Sexuality, Pregnancy and Parenting</b></p> <p>Aims: To develop an advanced understanding of issues and dilemmas in young people's decisions regarding sexual behaviour and pregnancy with implications for the assessment of teenage parents.</p>	<p>2 x 1 day courses</p> <p>44 attended</p>	<p>Participants looked at issues effecting young peoples choices regarding their sexuality and identified risk and vulnerability factors. They learned about a multi-agency approach to assessment and support of young teenage parents.</p> <p><b>Feedback Received:</b></p> <p>92% agreed course met development needs.</p>	<p>ASS – CSSC – 26 CSEd – CSEdS – 1 H – 10 HS – POL – PROB – SubM – 2 YOT – 1 Oth – 4</p>

<b>TRAINING TARGETS</b>	<b>ACHIEVEMENTS</b>	<b>OUTCOMES</b>	<b>EVALUATION FEEDBACK 2006/07</b>
<b>Disabled Young People and Emerging Sexuality</b>	1 x 1 day 31 attended	Participants explored the issues and challenges of the emerging sexuality of disabled young people approaching adulthood.  <b>Feedback Received:</b>  94% agreed course met development needs.	ASS – 2 CSSC – 27 CSEd – 1 CSEdS – H – 1 HS – POL – PROB – SubM – YOT – Oth –
<b>Internet Abuse</b>	1 x 1 day course <b>(Did not take place due to trainer unavailability)</b>		ASS – CSSC – CSEd – CSEdS – H – HS – POL – PROB – SubM – YOT – Oth –
<b>Achieving a Shared Understanding of Making and Receiving Effective Child Protection Referrals</b>	2 x 1 day course 29 attended	Participants explored how to effectively share information when making a referral and learned about different agency thresholds and referral criteria.  <b>Feedback Received:</b>  97% agreed course met development needs.	ASS – CSSC – 6 CSEd – 1 CSEdS – 4 H – 10 HS – POL – PROB – 5

<b>TRAINING TARGETS</b>	<b>ACHIEVEMENTS</b>	<b>OUTCOMES</b>	<b>EVALUATION FEEDBACK 2006/07</b>
			SubM – YOT – Oth – 3
<b>Dealing with the Impact and Aftermath of Allegations against staff</b>	1 x 1 day course <b>(Did not take place due to LSCB decision)</b>	Participants gained knowledge of how to deal with the impact of an allegation against a colleague or themselves whilst maintaining safe professional practice. They explored ways of minimising the impact of personal and professional harm.	ASS – CSSC – CSEd – CSEdS – H – HS – POL – PROB – SubM – YOT – Oth –
<b>Managing Allegations Against Staff</b>	1 x 1 day course  21 attended	Managers improved their understanding, application and inter-relation of CP and disciplinary procedures.  <b>Feedback Received:</b>  90% agreed course met development needs.	ASS – CSSC – 8 CSEd – 2 CSEdS – 1 H – 3 HS – POL – PROB – SubM – 1 YOT – 1 Oth – 5
<b>Understanding Mental Health</b>  Aims:	2 x 1 day course  51 attended	Participants were able to identify some of the symptoms, causes and treatments of mental health. They gained knowledge about the	ASS – 1 CSSC – 33 CSEd – 1 CSEdS – 3

<b>TRAINING TARGETS</b>	<b>ACHIEVEMENTS</b>	<b>OUTCOMES</b>	<b>EVALUATION FEEDBACK 2006/07</b>
To give staff a basic understanding of common mental health.		<p>general and more specific effects of mental illness on parenting ability and child protection.</p> <p><b>Feedback received:</b></p> <p>96% agreed course met development needs.</p>	<p>H – 10            HS –            POL – 1            PROB –            SubM –            YOT – 1            Oth – 1</p>
<p><b>The Impact of Parental Mental Health on Child Welfare</b></p> <p>Aims:            To use research and local inter-agency practice to identify risk to children whose parents have mental health problems.</p>	<p>3 x 1 day course</p> <p>46 attended</p>	<p>Participants were able to share and discuss good practice and think about ways to improve inter-agency communication. They looked at thresholds relating to Mental Health and risk</p> <p><b>Feedback Received:</b></p> <p>89% agreed course met development needs.</p>	<p>ASS – 1            CSSC – 23            CSEd –            CSEdS – 3            H – 14            HS –            POL –            PROB –            SubM – 2            YOT – 1            Oth – 2</p>
<p><b>Parents with Learning Difficulties – Developing Good Practice whilst Managing Risk</b></p> <p>Aims:            To use research and local inter-agency practice to identify risk to children whose parents have learning difficulties.</p>	<p>1 x 1 day course  <b>(1 cancelled due lack of trainer from LD Service)</b></p> <p>20 attended</p>	<p>Practitioners explored the term ‘Learning Disability’ and positive and negative experiences of inter-agency practice. They looked at notions of risk, resilience and competence surrounding parents with Learning Disabilities.</p> <p><b>Feedback Received:</b></p> <p>90% agreed course met development needs.</p>	<p>ASS –            CSSC – 13            CSEd – 1            CSEdS –            H – 6            HS –            POL –            PROB –            SubM –            YOT –            Oth –</p>

<b>TRAINING TARGETS</b>	<b>ACHIEVEMENTS</b>	<b>OUTCOMES</b>	<b>EVALUATION FEEDBACK 2006/07</b>
<p><b>Emotional Abuse and Neglect: Thresholds for Intervention and Outcomes for Children.</b></p> <p>Aims: To enable participants to explore the concept of emotional abuse and neglect through practice and research examples in an inter-agency training context.</p>	<p>1 x 2 day course</p> <p>27 attended</p>	<p>Participants will be able to identify categories/types of emotional abuse and neglect and to analyse information to lead to an informed assessment of risk. They will be able to establish consistent thresholds for intervention and to identify positive outcomes for children.</p> <p><b>Feedback Received:</b></p> <p>96% agreed course met development needs.</p>	<p>ASS – 1            CSSC – 13            CSEd – 1            CSEdS – 2            H – 7            HS –            POL –            PROB –            SubM – 1            YOT – 1            Oth – 1</p>
<p><b>Unexpected Child Death Protocol</b></p>	<p>2 x 1 day course (carried forward to 08/09)</p>		<p>ASS –            CSSC –            CSEd –            CSEdS –            H –            HS –            POL –            PROB –            SubM –            YOT –            Oth –</p>
<p><b>Linking MAPPA (Multi-Agency Public Protection Arrangements) with Child Protection Processes</b></p>	<p>6 x 2 hour briefings (carried forward to 08/09)</p>		<p>ASS –            CSSC –            CSEd –            CSEdS –            H –            HS –            POL –</p>

<b>TRAINING TARGETS</b>	<b>ACHIEVEMENTS</b>	<b>OUTCOMES</b>	<b>EVALUATION FEEDBACK 2006/07</b>
			PROB – SubM – YOT – Oth –
<b>Disabled Children: Assessing Needs and Managing Risk</b>	1 x 1 day course <b>(Did not take place due to lack of take up)</b>		ASS – CSSC – CSEd – CSEdS – H – HS – POL – PROB – SubM – YOT – Oth –
<b>Assessing Risk, Analysis and Decision Making</b>  Aims: To explore decision making and consider models for risk assessments when working within Child Protection	1 x 2 day courses.  15 attended.	Participants were able to build on existing assessment and learn about current research and theories which underpin good practice. As a multi-agency group they could explore their roles and responsibilities within the Assessment Framework (2000) and look at evidence based practice to achieve good outcomes for children.  <b>Feedback received</b>  98 % agreed course met development needs.	ASS – CSSC – 10 CSEd – CSEdS – 1 H – 2 HS – POL – PROB – SubM – 1 YOT – 1 Oth –
<b>Assessing Risk in First Time Parents</b>	1 x 1 day course <b>(Did not take place due to alternative</b>		ASS – CSSC – CSEd –

<b>TRAINING TARGETS</b>	<b>ACHIEVEMENTS</b>	<b>OUTCOMES</b>	<b>EVALUATION FEEDBACK 2006/07</b>
<p>Aims: To develop an advanced level of competence in assessing complex risk in first time parents.</p>	<p>mandatory assessment training)</p>	<p>.</p>	<p>CSEdS – H – HS – POL – PROB – SubM – YOT – Oth -</p>
<p><b>Basic Child Protection Awareness Training</b></p> <p>Aims: To provide a variety of staff from Eastbourne Borough and Wealden District Council with knowledge and understanding of Child Protection and Child Abuse Issues.</p>	<p>4 x half day course.  staff attended from across a variety of EBC and WDC services  66 attended</p>	<p>Participants were able to negotiate indicators to show a child needs help. They were enabled to be clear about action to be taken if they had concerns about a child. They were informed about the Child Protection Procedures and how to make an effective referral to Social Services.</p> <p><b>Feedback received</b></p> <p>90% agreed course met development needs</p>	<p>ASS – CSSC – CSEd – CSEdS – H – HS – POL – PROB – SubM – YOT – 0 Oth – 66</p>

<b>KEY</b>	
<b>ASS</b> – Adult Social Services	<b>POL</b> – Police
<b>CSSC</b> – Children’s Services Social Care	<b>PROB</b> – Probation
<b>CSEd</b> – Education	<b>SubM</b> – Substance Misuse
<b>CSEdS</b> – Education Schools	<b>YOT</b> – Youth Offending Team
<b>H</b> - Health	<b>O</b> – Other
<b>HS</b> – Housing	

## DRAFT LSCB TRAINING PLAN 2008 - 2009

Detailed in the framework below are the courses that will be made available to staff from the agencies represented by the Local Safeguarding Children's Boards. Courses will run from April 2008 to March 2009.

TRAINING PRIORITIES	TARGET GROUP	PLANNED OUTCOMES	LSCB COST	Outcome level (from Working Together Ch4)
<p><b>Child Protection – Introduction to Joint Investigations –</b></p> <p>Training on Investigation Skills in cases of Alleged Abuse for staff involved in investigations</p>	<p>Social Workers who have been qualified for 1 year.</p> <p>Experienced Social Workers who may require a refresher course and relevant police staff.</p> <p>2 x 1 day course Maximum 12 places per course</p>	<p>Enhance effective investigation skills, co-ordination and co-operative working between agencies in respect of joint investigations of alleged child abuse.</p>	<p><b>Trainer time + input from Police CPT</b></p>	<p><b>Level 3</b></p>
<p><b>Child Protection – Joint Investigations &amp; Achieving Best Evidence</b></p> <p>Joint Police and SSD training on Interviewing Children under Achieving Best Evidence guidelines.</p>	<p>Experienced Social Workers who have completed introductory training (above) or who are sufficiently competent and experienced, and either working, or intend to work, within a team undertaking investigative work and relevant police staff.</p> <p>1 x 8 day course. Maximum 6 places per year.</p>	<p>Opportunity for interview planning and observation of practice interviews and participation in at least one role-played interview. Participants will be able to observe and critique videos produced by self and others.</p>	<p><b>Trainer time</b></p>	<p><b>Level 3</b></p>
<p><b>An Introduction to Basic Child Protection Awareness for Voluntary and Community Groups</b></p>	<p>Non-statutory agencies – Private/voluntary/independent sectors Pre-school providers community/leisure groups</p> <p>This would include any staff working directly or indirectly with children.</p> <p>3 x 1 day courses 24 places.</p> <p>NB. Work has also been undertaken to ensure</p>	<p>To raise awareness of Child Protection issues. To enable staff to identify and respond to Child Protection concerns. To make staff aware of ESCC Child Protection Procedures. To encourage and develop effective inter-agency communication where Child Protection matters arise.</p>	<p><b>£1,200</b></p>	<p><b>Level 1</b></p>



TRAINING PRIORITIES	TARGET GROUP	PLANNED OUTCOMES	LSCB COST	Outcome level (from Working Together Ch4)
	training that supports the introduction of the Common Assessment Framework (CAF) includes reference to child protection and reporting child protection concerns.			
<b>Parental Substance and Alcohol Misuse and the Impact on Children.</b>	Children's Services, Health, Probation & YOT staff.  2 x 2 day courses.  24 places	Be aware of their own attitudes to substance and alcohol use and users and how this influences their practice. Demonstrate increased knowledge of effects, risks and potential harm of the principle substances of use/misuse and drinking patterns. Describe potential impact of harmful substance/alcohol use on children and families. Assess needs and provide a range of responses directed both at assisting parents and protecting and helping children.	<b>£2400</b>	<b>Level 2</b>
<b>Domestic Violence and the Impact on Children</b>	Children's Services, Police, Probation and Health staff including midwives, GPs and teachers 2 x 2 day courses.  24 places.	This course will enable participants to respond appropriately to domestic violence. They will reflect on current research on how children are affected by domestic violence. They will learn about current policies and local initiatives and resources.	<b>£2000</b>	<b>Level 2</b>
<b>Working with Families Living with Domestic</b>	2 x 1 day course	To equip participants with the skill to identify risk to a	<b>£1200</b>	<b>Level 2</b>

TRAINING PRIORITIES	TARGET GROUP	PLANNED OUTCOMES	LSCB COST	Outcome level (from Working Together Ch4)
<b>Violence</b>	24 places	child(ren) and mothers living with a perpetrator of DV. Participants will be able to identify and discuss issues and myths that promote and sustain DV. To gain a basic understanding of key issues and factors that facilitate effective intervention with perpetrators.		
<b>Working Together in Core Groups</b>	Children's Services, Health, Probation and YOT staff who are likely to be part of a core group  1 x 1 day courses.  24 places	Participants will explore effective inter-agency working in core-groups. They will learn how to develop effective CP plans.	<b>£1200</b>	<b>Level 3</b>
<b>Participating in the CP Conference Process</b>	Children's Services, Health, Probation and YOT staff who attend or who are likely to attend CP conferences, reviews and similar meetings.  2 x 1 day courses.  24 places per course.	To enable participants to explore the purpose and function of Child Protection Conferences; to give participants an opportunity to familiarise themselves with the processes of Child Protection Conferences and provide them with an understanding of their professional role in relation to conferences and similar meetings.	<b>£1200</b>	<b>Level 3</b>
<b>Child Protection in a Multi-Agency Context</b>	Newly qualified or inexperienced staff from Children's Services, Health, and Police who have little or no knowledge of the Child Protection Process.  2 x 1 day courses  24 places.	To enable participants to learn about the structure, roles and responsibilities of the statutory agencies involved in child protection. Participants will gain a greater understanding of the single and multi-agency approach to child protection, from initial identification to case conference and beyond.	<b>£1200</b>	<b>Level 1</b>
<b>Teenage Sexuality, Pregnancy &amp; Parenting Assessing Risk and</b>	Staff from Children's Services, Police, Health, Connexions PA's etc	To enable staff to consider the choices available to young people regarding	<b>£1200</b>	<b>Level 2</b>

<b>TRAINING PRIORITIES</b>	<b>TARGET GROUP</b>	<b>PLANNED OUTCOMES</b>	<b>LSCB COST</b>	<b>Outcome level (from Working Together Ch4)</b>
<b>outcomes for parent and child</b>	involved in assessment and support of sexually active young people.  2 x 1 day courses  24 places.	their sexuality and to identify factors of vulnerability and risk. Participants will learn about relevant government objectives and explore a multi-agency approach to assessment and support of young teenage parents.		
<b>Disabled Young People &amp; Emerging Sexuality</b>	Any professional working with physically or learning disabled young people.  1 x 1 day course  16 places	Participants will explore the issues and challenges of the emerging sexuality of disabled young people approaching adulthood.	<b>£600</b>	<b>Level 2</b>
<b>Internet Abuse</b>	Children Services, Health & Police, Probation & YOT Staff  1 x 1 day courses  24 places	Participants will develop knowledge of the methods by which children & young people are targeted via the internet, the associated risks & consider safe practice guidelines.	<b>£600</b>	<b>Level 3</b>
<b>Making and receiving effective Child Protection referrals and how this links to CAF.</b>	Places shared between Children's Services and Health Staff  2 x 1 day course  24 places	Participants from a variety of agencies will explore what information is required by the receiving agency in order to make an effective referral; the thresholds and referral criteria to which each agency works in order to achieve the best outcomes for service users.	<b>£1200</b>	<b>Level 2</b>
<b>Managing Allegations against staff.</b>	Managers of staff who may be subject to allegations of inappropriate behaviour towards children  1 x 1 day course/briefing  up to 100 places	To assist managers in their understanding and application of child protection and disciplinary procedures: and how these two procedures work together when appropriate. To alert managers to the new vetting and barring regulations.	<b>£1000</b>	<b>Level 2</b>
<b>Understanding Mental Health A Pathway Course: Day 1</b>	Children's Services, Health, CLDT, Housing, Probation, YOT staff and Police	Participants will gain a basic knowledge of common mental illnesses; symptoms and effect of	<b>£1200</b>	<b>Level 2</b>

TRAINING PRIORITIES	TARGET GROUP	PLANNED OUTCOMES	LSCB COST	Outcome level (from Working Together Ch4)
	2 x 1 day course 24 places	mental illness; causes and treatment and the impact of adult mental illness on a child.		
<b>The Impact of Parental Mental Health on Child Welfare.</b> <b>A Pathway course: Day 2</b>	Places shared between Adult Mental Health workers Children Services & Health staff working with families where there are adult mental health issues.  Participants ( except those from Adult MH) must complete day 1 (above) before applying for day 2.  2 x 1 day courses.  24 places	To identify risk to children whose parents have mental health problems. To facilitate inter-agency communication. To reflect on current research. To examine thresholds relating to risk.	<b>£1200</b>	<b>Level 2</b>
<b>Parents with Learning Disabilities Developing Good Working Practice whilst Managing Risk</b>	Staff from Adult Learning Disabilities, Children's Services & Health  2 x 1 day course  24 places	To explore inter-agency roles and responsibilities. To gain a shared understanding of the term "Learning Disability" To explore positive and negative experiences of inter-agency practice. To look at outcomes for children and families. To explore notions of risk, resilience and competence surrounding parents with learning disabilities.	<b>£1200</b>	<b>Level 2</b>
<b>Emotional Abuse &amp; Neglect: Thresholds for Intervention and Outcomes for Children.</b>	Statutory Agencies – i.e. Health & Children Services staff.  1 x 2 day courses.	To enable participants to explore the concept of neglect. To identify categories/types of neglect.	<b>£2000</b>	<b>Level 2</b>

TRAINING PRIORITIES	TARGET GROUP	PLANNED OUTCOMES	LSCB COST	Outcome level (from Working Together Ch4)
	20 places.	To enable participants to analyse information to lead to an informed assessment of risk. To enhance inter-agency communication and establish consistent thresholds for intervention. To explore current research and practice to identify positive outcomes for children.		
<b>Child Death Review Briefings</b>	Relevant LSCB members  3 x ½ day briefings  up to 300 places	TBC	<b>£1000</b>	<b>Level 3</b>
<b>Linking MAPPA (Multi-Agency Public Protection Arrangements) with Child Protection Processes</b>	Relevant Children's Services, Health and Housing  3 x ½ day briefings  up to 120 places	Participants will learn how Multi-Agency Public Protection works in co-ordinating risk management in the community, who is involved and what are the individual professional and Agency responsibilities with the MAPPA. Participants will gain an understanding of how to contact and communicate with MAPPA's and how Child Protection and MAPPA processes interlink.	<b>£1000</b>	<b>Level 3</b>
<b>Disabled Children: Assessing needs and managing risk</b>	Children's Services and Health staff  1 x 1 day course  24 places	This course will explore the assessment process and identifying risk to disabled children in the context of the Assessment Framework. Participants will explore ways to develop assessment practice to achieve positive outcomes for disabled children.	<b>£1000</b>	<b>Level 2</b>
<b>Assessing Risk, Analysis and Decision Making</b>	Children Services, Health and other Core Group Members.  1 x 2 day course	To explore decision making and risk assessments when working with Child Protection. To consider models for decision making and risk assessment and to explore	<b>£2000</b>	<b>Level 2</b>

TRAINING PRIORITIES	TARGET GROUP	PLANNED OUTCOMES	LSCB COST	Outcome level (from Working Together Ch4)
		concept of reflective practice and how it can assist the decision making process		
<p><b>An introduction to Working with Self Harm and Young People and the East Sussex Multi-Agency Protocol. Follow-up Workshops will be offered on:</b></p> <ol style="list-style-type: none"> <li><b>1) Working with Self Harm and Disabled Children and Young People.</b></li> <li><b>2) Working with Self-Harm issues in the 5-11 age group.</b></li> <li><b>3) Working with Self-Harm issues YP aged 12-19.</b></li> </ol>	<p>Children's Services, CAHMS and other relevant Health staff</p> <p>2 x 2 day courses plus</p> <p>2 full day and 4 ½ day workshops</p> <p>24 places per course and workshop.</p>	<p>To enable participants to broaden their knowledge and identify a range of Self-Harming behaviours. To equip staff with the skills and knowledge to undertake effective risk assessments and develop techniques to support Children and Young People who Self Harm</p>	<b>£5200</b>	<b>Level 2</b>
<p><b>Managing Risk to children and Young People where fabricated induced illness syndrome is suspected/present</b></p>	<p>Children's Services, Health and relevant Police Staff</p> <p>1 x 1 day course</p> <p>24 places</p>	TBC	<b>£600</b>	<b>Level 2</b>
<b>Total Cost</b>			<b>£ 31,400</b>	

### **East Sussex Local Safeguarding Children Board Members**

Matt Dunkley – Chair	ESCC: Children’s Services
Helen Davies	ESCC: Children’s Services
Sue Talbot	ESCC: Early Years
Fiona Johnson	ESCC: Head of Children’s Safeguards
Angela Reid	ESCC: Legal Advisor
Bob Skinner	ESCC: Training
Penny Lavan	ESCC: Education Welfare service
Mick McGlynn	ESCC: East LSCLG
Nicola McGeown	ESCC: West LSCLG
John Hawkins	ESCC: Youth Offending Services
Kate Dawson	ESCC: Adult Social Care
Marcus Gomm	ESCC: Community Safety
Det Supt Graham Bartlett	Sussex Police
DS Eddie Hick	Police Professional Advisor
D I Martin Sapwell	Sussex Police
Andrea Saunders	Sussex Probation Service
Jayne Boyfield	Hastings & Rother & Eastbourne Downs & Weald PCTs
Jane Henty	East Sussex Hospitals NHS Trust
Sue Webb	Strategic Health Authority
Martin Lewis	Sussex Ambulance Service NHS Trust
Helen Greatorex	Sussex Partnership NHS Trust
Dawn Sampson	Designated Nurse, Eastbourne Downs & Weald PCT
Kevin O’Sullivan	Named Nurse, Eastbourne Downs & Weald PCT
Debbie Barnes	Named Nurse, Hastings & Rother PCT
Eugene Jones	Named Nurse, Sussex Partnership NHS Trust
Dr Tracey Ward	Designated Doctor, East Sussex Hospitals NHS Trust
Dr Sarah Thomson	Designated GP, Hastings & Rother PCT
Catriona McIver	Designated GP, Eastbourne Downs & Weald PCT
Mary Clare Deane	Wealdon District Council
Andrew Palmer	Hastings Borough Council
Neil Fuller	Eastbourne Borough Council
Owen Clifford	Lewes District Council
Anne Fennessy	Rother District Council
Chris Pascoe	East Sussex Rescue & Fire Service
Helen Cryer	Secondary Head Teacher
Gillian Morrow	Primary Head Teacher
Louise Carlyle	Special Education Head Teacher
Chris Piper	Learning Skills Council
Mark Preston	Connexions
Bridget Langford	NSPCC
Ann Flynn	CAFCASS